

552 Valley Rd  
Clifton, NJ

# Lighting Layout Version 2



Prepared By:  
Damin Sales  
28 Brunswick Avenue  
Edison, NJ 08817  
P: 732-985-8866  
F: 732-985-5521

Filename: c:\User\aron\OneDrive - Damin Sales\Photometrics\Layout Information\522 Valley Rd, Clifton, NJ\522 Valley Rd, Clifton, NJ\522 Valley Rd - Clifton - Vers 2.AGI

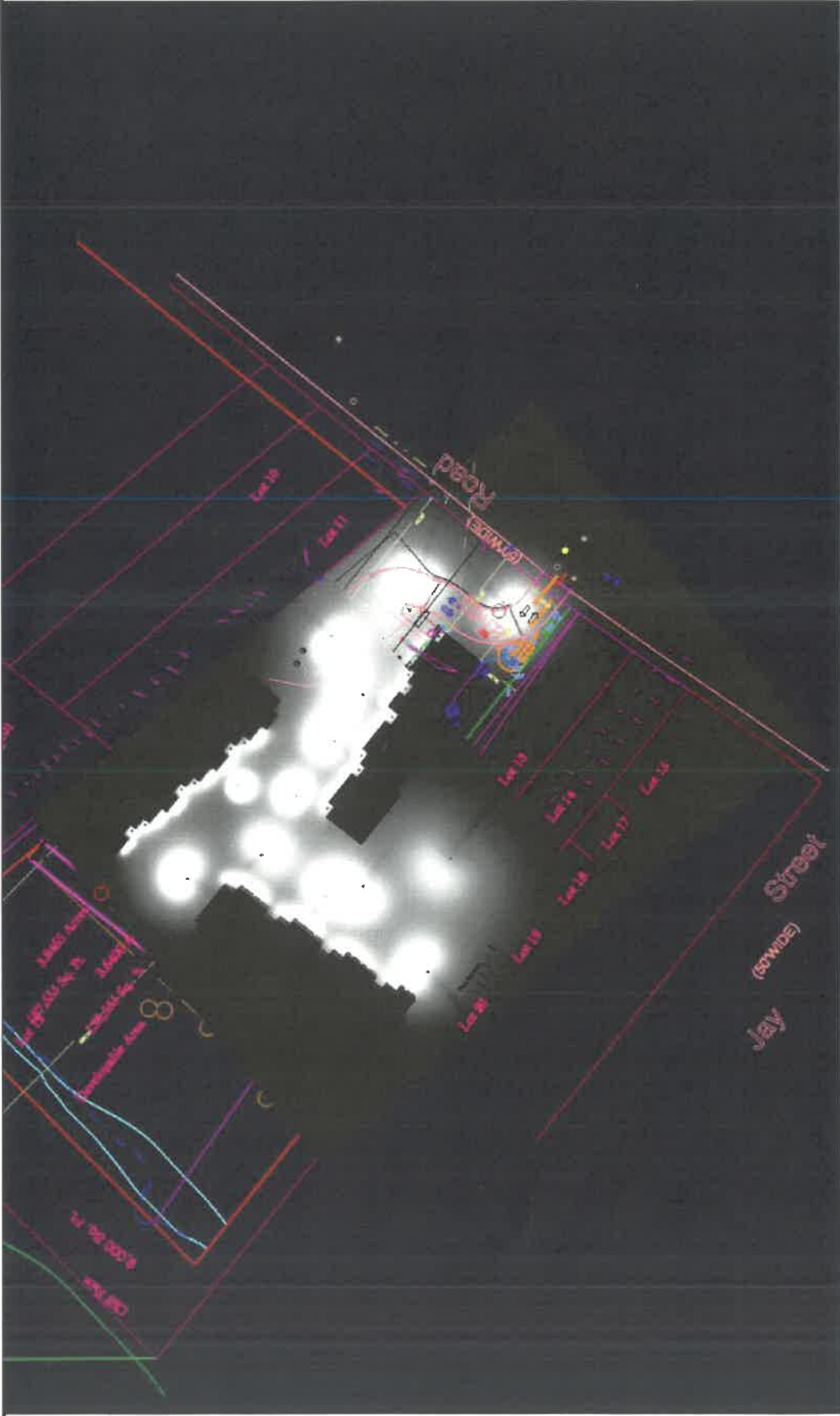
Job Name:  
552 Valley Rd  
Clifton, NJ  
Lighting Layout  
Version 2


Scale: as noted  
Date: 10/5/2022  
Filename: 522 Valley Rd - Clifton - Vers 2.AGI  
Drawn By: Aaron Boyce

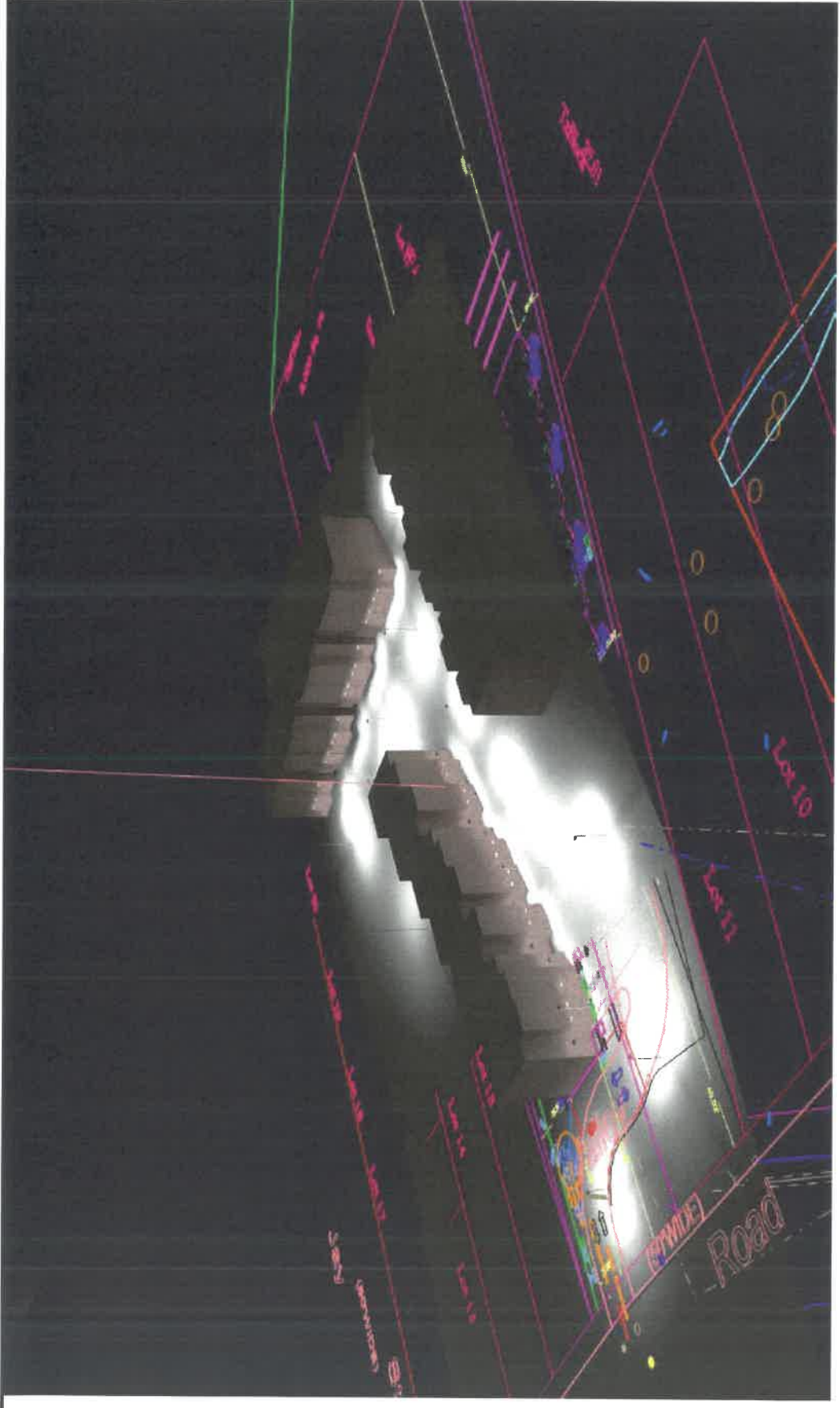
Case:

### Lighting Design disclaimer

The Lighting Analysis and Design Lighting Analysis Report (LAR) represents an anticipated prediction of lighting system performance based upon design parameters and information supplied by others. These design parameters and information provided by others have not been independently verified by Damini Sales and the results may vary from the actual field conditions. Damini Sales recommends that design parameters and other information be field verified to reduce variation. Damini Sales neither warrants, represents, or guarantees the accuracy or completeness of the information contained herein. The Lighting Analysis Report is provided as advisory information only and is not intended for construction purposes. For more information, please contact Damini Sales. The Lighting design is based, in whole or in part, on advisory documents for information purposes and is not intended for construction purposes. Images taken from Google Earth.  
Scale is based on Tabloid Page Size (11 x 17)



 <p><b>DAMIN SALES</b> COMMERCIAL LIGHTING &amp; ELECTRICAL CONTRACTORS</p>	<p>Prepared By: Damin Sales 28 Brunswick Avenue Edison, NJ 08817 P: 732-985-8866 F: 732-985-5521</p> <p>Filename: C:\Users\aron\OneDrive - Damin Sales\Documents\Layout Information\522 Valley Rd, Clifton, NJ\522 Valley Rd - Clifton - Vers 2.AGI</p>	<p>Job Name: 522 Valley Rd Clifton, NJ Lighting Layout Version 2</p>	<p>Scale: as noted</p> <p>Date: 10/5/2022</p> <p>Filename: 522 Valley Rd - Clifton - Vers 2.AGI</p> <p>Drawn By: Aaron Boyea</p>	<p>Lighting Design Disclaimer</p> <p>The Lighting Analysis, as well as Energy Analysis and/or Visual Simulation (if Lighting Design) provided by Damin Sales represents an anticipated prediction of lighting system performance based upon design parameters and information supplied by others. These design parameters and information provided by others have not been independently verified by Damin Sales and therefore, results may vary from the actual field conditions. Damin Sales recommends that design parameters and other information be field verified to reduce variation. Damin Sales neither warrants, represents, or guarantees the accuracy, completeness, or suitability of the Lighting Design, nor, as compliant with any applicable regulatory code requirements with the exception of the coverage created and submitted by Damin Sales. The Lighting Design is issued, in whole or in part, as advisory documents for informational purposes and is not intended for construction nor is it to be used for any other purpose without the express written consent of Damin Sales. ©2022 Damin Sales, Inc. All rights reserved.</p> <p>Scale is based on 1" equal Page Sizes (11" x 17")</p>
--	---	--	--	---



Prepared By:  
 Damin Sales  
 28 Brunswick Avenue  
 Edison, NJ 08817  
 P: 732-985-8886  
 F: 732-985-5521

Job Name:  
 522 Valley Rd  
 Clifton, NJ  
 Lighting Layout  
 Version 2

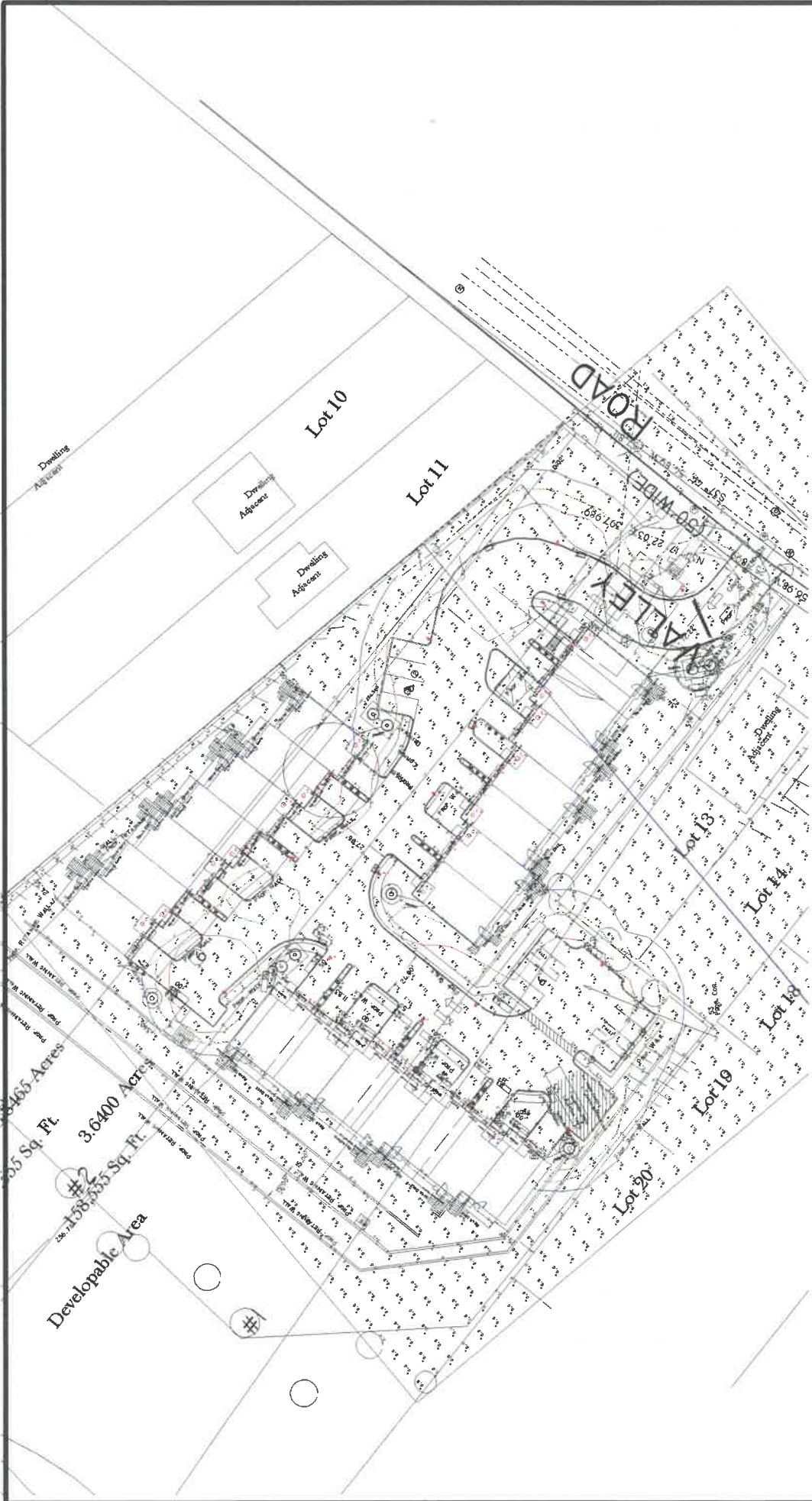
Scale: as noted  
 Date: 10/6/2022  
 Case:  
 Filename: 522 Valley Rd - Clifton - Vers 2.AGI  
 Drawn By: Aaron Boyce

**Lighting Design Disclaimer**

The Lighting Analysis and Visual Simulation ("Lighting Design") provided by Damin Sales represents an anticipated prediction of lighting system performance based upon design and analysis. The Lighting Design is not a guarantee of lighting system performance. Damin Sales neither warrants, represents or assumes any liability for the Lighting Design. Damin Sales neither warrants, represents or assumes any liability for the Lighting Design. Damin Sales neither warrants, represents or assumes any liability for the Lighting Design. The Lighting Design is based on information provided to Damin Sales and is not intended for construction or project construction documentation package.

Scale is based on 1" = 10' (11 x 17)

Filename: C:\Users\aaam\OneDrive - Damin\_Sales\Photometrics\Layout\_Information\522 Valley Rd, Clifton, NJ\522 Valley Rd - Clifton - Vers 2.AGI



**Lighting Design Disclaimer**  
 This Lighting Analysis, including Energy Analysis and/or Visual Simulation (if Lighting Design) provided by Damini Sales represents an anticipated prediction of lighting system performance based upon design parameters and information supplied by others. These design parameters and information provided by others have not been independently verified by Damini Sales and therefore, the results may vary from the actual field conditions. Damini Sales recommends that design parameters and other information be field-verified to reduce variation. Damini Sales neither warrants, represents, or guarantees the appropriateness, completeness or suitability of the Lighting Design as compliant with any applicable regulatory code requirements with the exception of the drawings created and submitted by Damini Sales. The Lighting Design is issued, in whole or in part, as advisory documents for informational purposes and is not intended for construction nor is it to be used in lieu of any applicable regulatory code requirements. Images are based on Google Earth.  
 Scale is based on Tabulated Page Sizes (11 x 17)

Scaler: as noted  
 Date: 10/05/2022  
 Case:  
 Filename: 522 Valley Rd - Clifton - Vers 2.AGI  
 Drawn By: Aaron Boyce

Job Name:  
 522 Valley Rd  
 Clifton, NJ  
 Lighting Layout  
 Version 2

Prepared By:  
 Damini Sales  
 28 Brunswick Avenue  
 Edison, NJ 08817  
 P: 732-985-8868  
 F: 732-985-5521

Files: C:\Users\aron\OneDrive - Damini Sales\Photometrics\Layout Information\522 Valley Rd, Clifton, NJ\522 Valley Rd - Clifton - Vers 2.AGI

**DAMINI SALES**  
 LIGHTING DESIGN & CONSULTING

**Luminaire Schedule**

Tag	Symbol	Qty	Label	Arrangement	Lum. Lumens	LLF	Description	Lum. Watts	Arr. Watts	Total Watts
A		14	IVAT14-130L730U - DLF1810114-2	Single	13232	1.000		117.311	117.311	1642.354
B		14	CRVFAD-12R-16-9CCT-120-BN	Single	1217	1.000	Surface Mount	15.8	15.8	221.2
C		48	CAR8_10_119FAUNVW	Single	863	1.000	Recessed Mount	11	11	528

**Calculation Summary**

Label	CalcType	Units	Avg	Max	Min	Avg/Min	Max/Min	Description	FSpcLr	FSpcTb	Meter Type
Object 25 Planar	Illuminance	Fc	2.14	16.7	0.0	N.A.	N.A.		10	10	Normal
Object 26 Planar	Illuminance	Fc	0.61	16.4	0.0	N.A.	N.A.		10	10	Normal
Target Area	Illuminance	Fc	5.18	61.7	0.6	8.63	102.83	Readings Taken at Grade			

**NOTES:**

- The light loss factor (LLF) is a product of many variables, only lamp lumen depreciation (LLD) has been applied to the calculated results unless otherwise noted. The LLD is the result (quotient) of mean lumens / initial lumens per lamp / manufacturers' specifications.
- Illumination values shown (in foot-candle) are the predicted results for planes of calculation either horizontal, vertical or inclined as designated in the calculation summary. Meter orientation is normal to the plane of calculation.
- The calculated results of this lighting simulation represent an anticipated prediction of system performance. Actual measured results may vary from the anticipated performance and are subject to means and methods which are beyond the control of Damini Sales.
- Mounting height determination is job-site specific, our lighting simulations assume a mounting height (insertion point of the luminaire symbol) to be taken at the top of the symbol for ceiling mounted luminaires and at the bottom of the symbol for all other luminaire mounting configurations.
- Damini Sales luminaires and product designs are protected under U.S. and International intellectual property laws. Patents issued or pending apply.

Isoline Legend	
Illuminance (Fc)	Color
0.5	
1	
2	



Prepared By:  
 Damini Sales  
 28 Brunswick Avenue  
 Edison, NJ 08817  
 P: 732-965-6866  
 F: 732-965-6521

Job Name:  
 522 Valley Rd  
 Clifton, NJ  
 Lighting Layout  
 Version 2

Scale: N.T.S.  
 Date: 10/5/2022  
 Filename: 522 Valley Rd - Clifton - Vrs 2.AGI  
 Drawn By: Aaron Boyce

**Lighting Design Disclaimer**

The Lighting Analysis, layout, Energy Analysis and/or Visual Simulation ("Lighting Design") provided by Damini Sales represents an anticipated prediction of lighting system performance results that may vary from the actual field conditions. Damini Sales recommends that design parameters and other information be left unaltered to reduce variation. Damini Sales neither warrants, represents or assumes liability for actual measured light levels or energy consumption levels as compared to those illustrated by the Lighting Design. Damini Sales neither warrants, represents or assumes liability for the Lighting Design. The Lighting Design is issued, in whole or in part, as advisory documents for informational purposes and is not intended for construction or project construction documentation package.  
 Scale is based on: Tabletop Page Size (11 x 17)

**Luminaire Location Summary**

LumNo	Label	Mounting Height
1	IVAT4-130L730U - DLF1810114-2	10.856
2	IVAT4-130L730U - DLF1810114-2	11.421
3	IVAT4-130L730U - DLF1810114-2	17.155
4	IVAT4-130L730U - DLF1810114-2	26.137
5	IVAT4-130L730U - DLF1810114-2	47.332
6	IVAT4-130L730U - DLF1810114-2	41.584
7	IVAT4-130L730U - DLF1810114-2	36.555
8	IVAT4-130L730U - DLF1810114-2	36.555
9	IVAT4-130L730U - DLF1810114-2	26.137
10	IVAT4-130L730U - DLF1810114-2	36.555
12	IVAT4-130L730U - DLF1810114-2	26.137
13	IVAT4-130L730U - DLF1810114-2	26.137
14	IVAT4-130L730U - DLF1810114-2	26.137
16	IVAT4-130L730U - DLF1810114-2	36.555
17	C4R8_10_119FAUNVW	39.5
18	C4R8_10_119FAUNVW	39.5
19	C4R8_10_119FAUNVW	39.5
20	C4R8_10_119FAUNVW	39.5
21	C4R8_10_119FAUNVW	39.5
22	C4R8_10_119FAUNVW	39.5
23	C4R8_10_119FAUNVW	39.5
24	C4R8_10_119FAUNVW	39.5
25	C4R8_10_119FAUNVW	39.5
26	C4R8_10_119FAUNVW	39.5
27	C4R8_10_119FAUNVW	39.5
28	C4R8_10_119FAUNVW	39.5
29	C4R8_10_119FAUNVW	39.5
30	C4R8_10_119FAUNVW	39.5

**NOTES:**  
 \* The light loss factor (LLF) is a product of many variables, only lamp lumen depreciation (LLD) has been applied to the calculated results unless otherwise noted. The LLF is the result (quotient) of mean lumens / initial lumens per lamp manufacturers' specifications.  
 \* Illumination values shown (in footcandle) are the predicted results for planes of calculation either horizontal, vertical or inclined as designated in the calculation summary. Meter orientation is normal to the plane of calculation.  
 \* The calculated results of this lighting simulation represent an anticipated prediction of system performance. Actual measured results may vary from the anticipated performance and are subject to means and methods which are beyond the control of Damini Sales.  
 \* Mounting height determination is job site specific, our lighting simulations assume a mounting height (insertion point of the luminaire symbol) to be taken at the top of the symbol for ceiling mounted luminaires and at the bottom of the symbol for all other luminaire mounting configurations.  
 \* Damini Sales luminaires and product designs are protected under U.S. and International intellectual property laws. Patents issued or pending apply.

**Luminaire Location Summary**

LumNo	Label	Mounting Height
31	C4R8_10_119FAUNVW	39.5
32	C4R8_10_119FAUNVW	39.5
33	C4R8_10_119FAUNVW	39.5
34	C4R8_10_119FAUNVW	39.5
35	C4R8_10_119FAUNVW	39.5
36	C4R8_10_119FAUNVW	39.5
37	C4R8_10_119FAUNVW	39.5
38	CRVFAD-12R-16-9CCT-120-BN	9.5
39	CRVFAD-12R-16-9CCT-120-BN	9.5
40	CRVFAD-12R-16-9CCT-120-BN	12.5
41	CRVFAD-12R-16-9CCT-120-BN	12.5
42	CRVFAD-12R-16-9CCT-120-BN	15.653
43	CRVFAD-12R-16-9CCT-120-BN	19
44	CRVFAD-12R-16-9CCT-120-BN	25
45	CRVFAD-12R-16-9CCT-120-BN	9.5
46	CRVFAD-12R-16-9CCT-120-BN	29.109
47	CRVFAD-12R-16-9CCT-120-BN	29.109
48	CRVFAD-12R-16-9CCT-120-BN	34.033
49	CRVFAD-12R-16-9CCT-120-BN	34.033
50	CRVFAD-12R-16-9CCT-120-BN	39.081
51	CRVFAD-12R-16-9CCT-120-BN	39.081
52	C4R8_10_119FAUNVW	25
53	C4R8_10_119FAUNVW	25
54	C4R8_10_119FAUNVW	19
55	C4R8_10_119FAUNVW	19
56	C4R8_10_119FAUNVW	15.653
57	C4R8_10_119FAUNVW	15.653
58	C4R8_10_119FAUNVW	12.5
59	C4R8_10_119FAUNVW	12.5
60	C4R8_10_119FAUNVW	12.5
61	C4R8_10_119FAUNVW	12.5
62	C4R8_10_119FAUNVW	9.5
63	C4R8_10_119FAUNVW	9.5
64	C4R8_10_119FAUNVW	9.5
65	C4R8_10_119FAUNVW	9.5
66	C4R8_10_119FAUNVW	9.5
67	C4R8_10_119FAUNVW	29.109
68	C4R8_10_119FAUNVW	29.109
69	C4R8_10_119FAUNVW	29.109
70	C4R8_10_119FAUNVW	29.109
71	C4R8_10_119FAUNVW	34.033
72	C4R8_10_119FAUNVW	34.033
73	C4R8_10_119FAUNVW	34.033
74	C4R8_10_119FAUNVW	34.033
75	C4R8_10_119FAUNVW	39.081
76	C4R8_10_119FAUNVW	39.081
77	C4R8_10_119FAUNVW	39.081
78	C4R8_10_119FAUNVW	39.081

**Lighting Design Disclaimer**  
 The Lighting Analysis, as well as Energy Analysis, Energy Simulation ("Lighting Design") provided by Damini Sales represents an anticipated prediction of lighting system performance based upon design parameters and information supplied by others. These design parameters and information provided by others have not been fully verified by Damini Sales and therefore our results may vary from the actual field conditions. Damini Sales recommends the design parameters and information be reviewed to reduce variation. Damini Sales also states warranties, limitations, and disclaimers are provided in the Lighting Design report. Damini Sales does not warrant the accuracy, completeness or suitability of any applicable regulatory code requirements with the exception of the design created and submitted by Damini Sales. The Lighting Design is issued, in whole or in part, as advisory documents for informational purposes and is not intended for construction nor shall it be used for any other purpose without the express written consent of Damini Sales.  
 Scale is based on 1"=10' P-AGE SIZES (1" X 17")

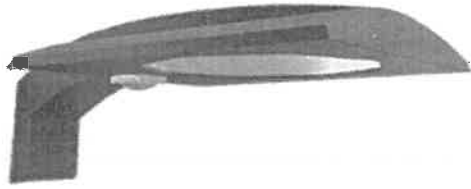
Scale: N.T.S.  
 Date: 10/5/2022  
 Filename: 522 Valley Rd - Clifton - Vers 2.AGI  
 Drawn By: Aaron Boyce

Job Name:  
 522 Valley Rd  
 Clifton, NJ  
 Lighting Layout  
 Version 2

Prepared By:  
 Damini Sales  
 28 Brunswick Avenue  
 Edison, NJ 08817  
 P: 732-985-8868  
 F: 732-985-5521



Files: C:\Users\Baren\OneDrive - Damini Sales\Photos\Lighting\Layout Information\522 Valley Rd - Clifton - Vers 2.AGI



Low profile, low glare. Edge-lit technology unlike any other.

Color: Bronze

Weight: 14.4 lbs

Project:

Type:

Prepared By:

Date:

### Driver Info

Type	Constant Current
120V	1.00A
208V	0.58A
240V	0.50A
277V	0.43A
Input Watts	117.3W

### LED Info

Watts	117W
Color Temp	3000K (Warm)
Color Accuracy	80 CRI
L70 Lifespan	100,000 Hours
Lumens	13,232
Efficacy	112.8 lm/W

## Technical Specifications

### Compliance

#### UL Listed:

Suitable for wet locations

#### IESNA LM-79 & LM-80 Testing:

RAB LED luminaires have been tested by an independent laboratory in accordance with IESNA LM-79 and LM-80

#### California Title 24:

Can be used to conform with the requirements of California Title 24 Part 6.

#### DLC Listed:

This product is listed by Design Lights Consortium (DLC) as an ultra-efficient premium product that qualifies for the highest tier of rebates from DLC Member Utilities. Designed to meet DLC 5.1 requirements.

DLC Product Code: S-EPBGIT

### Electrical

#### Driver:

Class 2, 50/60Hz, 120-277V, 4kV standard, 10kV optional

#### Dimming Driver:

Driver includes dimming control wiring for 0-10V dimming systems. Requires separate 0-10V DC dimming circuit. Dims down to 10%.

#### THD:

3.48% at 120V, 5.48% at 277V

#### Power Factor:

99.9% at 120V, 97% at 277V

### Performance

#### Lifespan:

100,000-Hour LED lifespan based on IES LM-80 results and TM-21 calculations at 25°C

### LED Characteristics

#### LEDs:

Long-life, high-efficacy, surface-mount LEDs

#### Color Stability:

LED color temperature is warranted to shift no more than 200K in color temperature over a 5-year period

#### Color Uniformity:

RAB's range of Correlated Color Temperature follows the guidelines of the American National Standard for Specifications for the Chromaticity of Solid State Lighting (SSL) Products, ANSI C78.377-2017.

### Construction

#### IP Rating:

Ingress protection rating of IP66 for dust and water

#### Cold Weather Starting:

The minimum starting temperature is -40°C (-40°F)



## Technical Specifications (continued)

### Construction

#### Maximum Ambient Temperature:

Suitable for use in up to 40°C (104°F)

#### Housing:

Precision die-cast aluminum

#### IES Classification:

The Type IV distribution is especially suited for mounting on the sides of buildings and walls, and for illuminating the perimeter of parking areas. It produces a semicircular distribution with essentially the same candlepower at lateral angles from 90° to 270°.

#### Mounting:

Universal pole adapter

#### Lens:

Diffused Polymethyl Methacrylate (PMMA)

### Effective Projected Area:

EPA = 0.61

### Finish:

Formulated for high durability and long-lasting color

### Green Technology:

Mercury and UV free. RoHS-compliant components.

### Sensor Specifications

#### Multi Level Motion Sensor:

\*40 ft. diameter coverage from 20 ft. height.

### Other

#### Equivalency:

Equivalent to 450W Pulse Start Metal Halide

### Warranty:

RAB warrants that our LED products will be free from defects in materials and workmanship for a period of five (5) years from the date of delivery to the end user, including coverage of light output, color stability, driver performance and fixture finish. RAB's warranty is subject to all terms and conditions found at [rablighting.com/warranty](http://rablighting.com/warranty).

### Buy American Act Compliance:

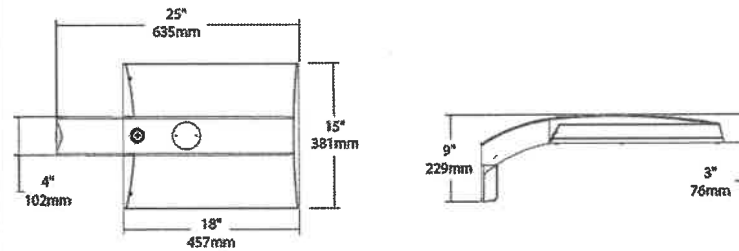
RAB values USA manufacturing! Upon request, RAB may be able to manufacture this product to be compliant with the Buy American Act (BAA). Please contact customer service to request a quote for the product to be made BAA compliant.

### Optical

#### BUG Rating:

B3 U0 G3

## Dimensions



## Features

0-10V Dimming, standard

100,000-Hour LED lifespan





## Ordering Matrix

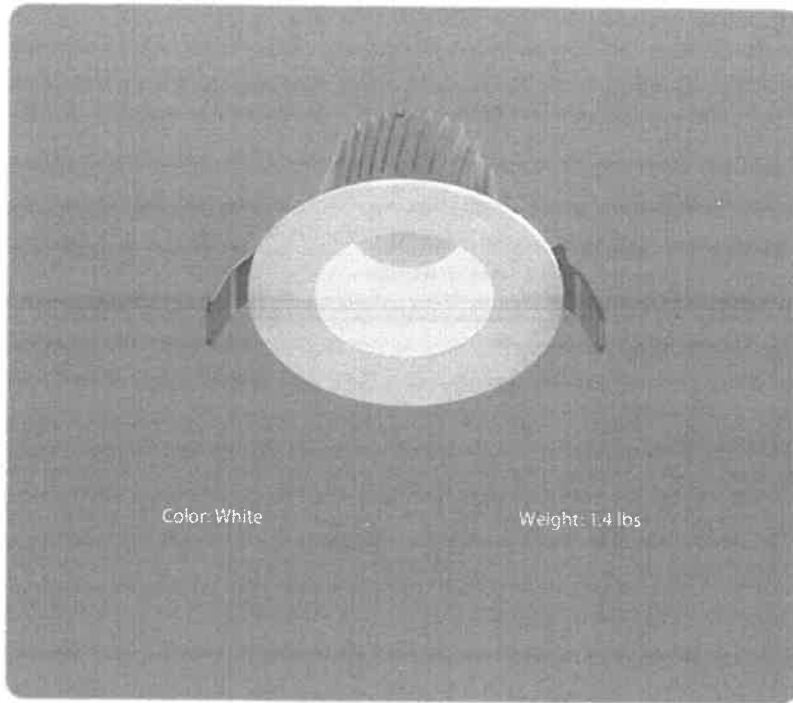
Family	Distribution		Lumen Output	Mounting	CRI/Color Temp	Finish	Voltage/Driver	Sensor Options	Lightcloud Option
IVA	T4	-	130L	PA	730	Z	U	/WS2	
T2 = Type II *			45L = 4,500 lumens (38W)	PA = Universal Pole Mount	750 = 70CRI 5000K	Z = Bronze	U = 120-277V 0-10V Dimming	Blank = No Options	Blank = No Lightcloud*
T3 = Type III *			75L = 7,500 lumens (67W)	WM = Wall mount	740 = 70CRI 4000K	W = White	H = 347-480V, 0-10V Dimming	/WS = 8ft lens	/LC = Lightcloud* Controller <sup>2</sup>
T4 = Type IV *			100L = 10,000 lumens (94W)	SF = Slipfitter	730 = 70CRI 3000K	G = Roadway Gray		/WS2 = 20ft lens	
T5S = Type V Square *			130L = 13,000 lumens (117W) <sup>1</sup>			K = Black		Wattstopper	
FT = Forward Throw *								/WS4 = 40ft lens	
								Wattstopper	
								/7PR = 7-Pin receptacle	

<sup>1</sup> Applies to Type IV, V Square

<sup>2</sup> Applies 120-277V

\* All values are nominal with +/- 10% tolerance. See spec sheet for more details.





Color: White

Weight: 1.4 lbs

<b>Project:</b>	<b>Type:</b>
<b>Prepared By:</b>	<b>Date:</b>

Driver Info		LED Info	
Type	Constant Current	Watts	8W
120V	92	Color Temp	Field Adjustable
208V	N/A	Color Accuracy	N/A
240V	N/A	L70 Lifespan	60,000 Hours
277V	40	Lumens	660/768/865
Input Watts	8/10/11W	Efficacy	81/75/77 lm/W

## Technical Specifications

### Performance

**Product Type:**

Commercial Downlight Direct Mount

**Efficacy:**

81/75/77 lm/W

**Lifespan:**

60,000-Hour LED lifespan based on IES LM-80 results and TM-21 calculations

### Other

**Lumens (Nominal):**

650/750/850lm

**Warranty:**

RAB warrants that our LED products will be free from defects in materials and workmanship for a period of five (5) years from the date of delivery to the end user, including coverage of light output, color stability, driver performance and fixture finish. RAB's warranty is subject to all terms and conditions found at [rablighting.com/warranty](http://rablighting.com/warranty).

**Trade Agreements Act Compliant:**

This product is a product of Cambodia and a "designated country" end product that complies with the Trade Agreements Act

**Buy American Act Compliance:**

RAB values USA manufacturing! Upon request, RAB may be able to manufacture this product to be compliant with the Buy American Act (BAA). Please contact customer service to request a quote for the product to be made BAA compliant.

### LED Characteristics

**Color Temperature:**

3000K/3500K/4000K/5000K

### Electrical

**Dimming Driver:**

Driver includes dimming control wiring for 0-10V dimming systems. Requires separate 0-10V DC dimming circuit. Dims down to 10%.

**THD:**

≤20%

**Power Factor:**

≥0.9

**Input Voltage:**

120-277V AC

**Operating Frequency:**

50/60Hz

**Operating Temperature:**

-30°C - 40°C



## Technical Specifications (continued)

### Construction

**Size:**  
4"

**Housing Material:**  
Metal

**Finish:**  
White

**Trim Style:**  
Smooth Trim

**Air Tight:**  
Housing certified Air Tight as per ASTM E283

### Compliance

**Safety Listing:**  
UL Listed, UL Classified

**Environment:**  
Wet

**IC Rated:**  
Suitable for direct contact with insulation

**T24 JA8 Compliant:**  
Complies with Title 24 Appendix JA8

**Lawful for Sale in California:**  
Yes

### RoHS:

Mercury and UV free. RoHS-compliant components.

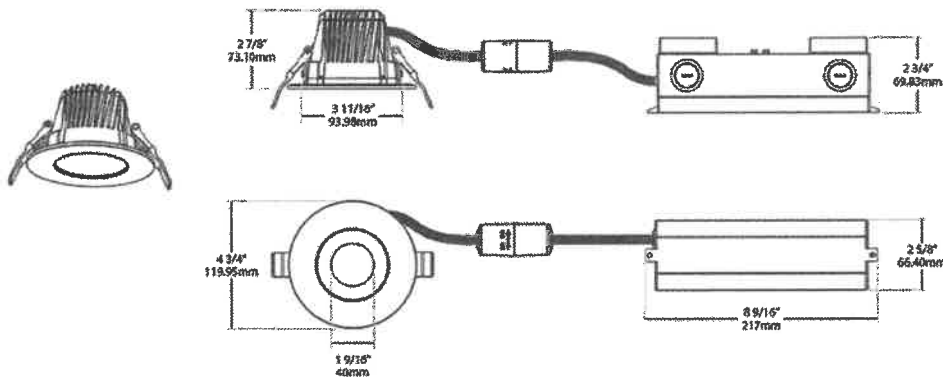
### FCC:

Complies with Part 15 of the FCC Rules

### Model Number:

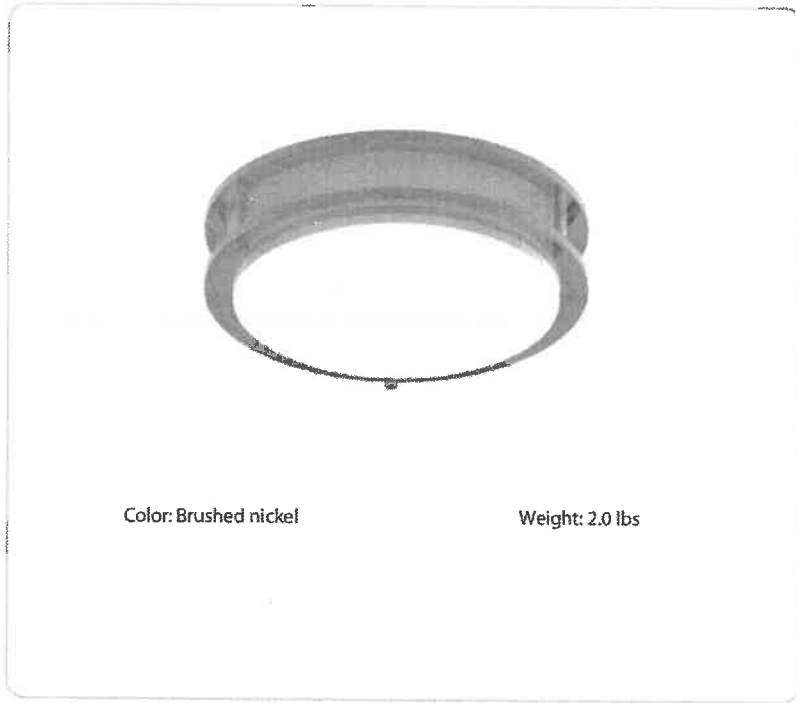
DLC0038(C4R8/10/119FAUNVW)

## Dimensions



## Ordering Matrix

Family	Size	Shape	Wattage	CRI/Color Temp	Voltage	Finish
C	4	R	8/10/11	9FA	UNV	W
	3 = 3"	R = Round	5.5/7/8.5 = 5.5W/7W/8.5W	9FA = 90 CRI, Field Adjustable	UNV = 120-277V	W = White
	4 = 4"		8/10/11 = 8W/10W/11W			M = Matte Silver
	6 = 6"		12/18/24 = 12W/18W/24W			
	8 = 8"		34/46/59 = 34W/46W/59W			



<b>Project:</b>	<b>Type:</b>
<b>Prepared By:</b>	<b>Date:</b>

Driver Info		LED Info	
Type	Constant Current	Watts	16W
120V	0.15A	Color Temp	2700K/3000K/3500K/4000K/5000K
208V	N/A	Color Accuracy	90 CRI
240V	N/A	L70	50,000 Hours
277V	N/A	Lumens	1,100
Input Watts	16W	Efficacy	68.8

Technical Specifications		
<p><b>Performance</b></p> <p><b>Description:</b> 5CCT selectable, low maintenance, decorative backlit LED retrofit fixture installs on standard junction boxes.</p> <p><b>Product Type:</b> Surface &amp; Flush Mounts</p> <p><b>Input Wattage:</b> 16W</p> <p><b>Lumens (Nominal):</b> 1100lm</p> <p><b>Efficacy:</b> 68.8 lm/W</p>	<p><b>L70 Lifespan:</b> 50,000-Hour LED lifespan based on IES LM-70 results</p> <p><b>R9 Value:</b> High color performance with R9 greater than or equal to 50</p> <p><b>Compliance</b></p> <p><b>UL Listed:</b> Suitable for wet locations</p> <p><b>ENERGY STAR V2.2:</b> This product is ENERGY STAR® Version 2.2 Certified.</p> <p><b>Energy Star ID:</b> 2389850</p>	<p><b>Electrical</b></p> <p><b>Dimming Driver:</b> TRIAC compatible dimmer with dimming as low as 10%.</p> <p><b>THD:</b> ≤20%</p> <p><b>Power Factor:</b> ≥0.9</p> <p><b>Flicker:</b> ≤30%</p>

**Technical Specifications (continued)**

**Electrical**

**Input Voltage:**

120V

**Operating Frequency:**

60Hz

**Construction**

**Material:**

Metal and Plastic

**Trim Style:**

Smooth Trim

**Shape:**

Round

**Mounting:**

Surface mount

**Operating Temperature:**

-20°C (-4°F) to 40°C (104°F)

**Size:**

12"

**Optical**

**Beam Angle:**

130°

**Other**

**Warranty:**

RAB warrants that our LED products will be free from defects in materials and workmanship for a period of five (5) years from the date of delivery to the end user, including coverage of light output, color stability, driver performance and fixture finish. RAB's warranty is subject to all terms and conditions found at [rablighting.com/warranty](http://rablighting.com/warranty).

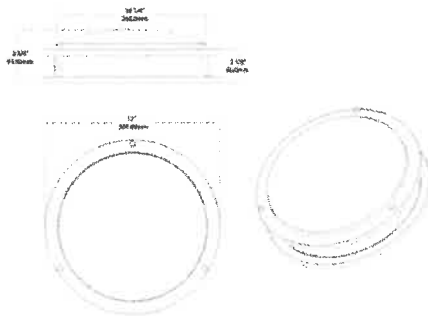
**Trade Agreements Act Compliant:**

This product is a product of Cambodia and a "designated country" end product that complies with the Trade Agreements Act

**Buy American Act Compliance:**

RAB values USA manufacturing! Upon request, RAB may be able to manufacture this product to be compliant with the Buy American Act (BAA). Please contact customer service to request a quote for the product to be made BAA compliant.

**Dimensions**



**Features**

- Surface Mount to ceiling or wall
- Field adjustable "set and forget" color temperature
- Diffused lens provides soft, smooth light
- Ideal for hospitality and multi-family residential applications
- Triac and 0-10V dimming options
- Suitable for wet and damp locations
- 50,000-Hour lifespan

Ordering Matrix

Family	Type	Size	Shape	Wattage	CRI/Color Temp	Voltage	Dimming	Finish	Sensor	Options					
CRVFA	D	-	12	R	-	16	-	9CCT	-	120	-	BN	-		
	S = Smooth D = Decorative	11 = 11" 12 = 12" 14 = 14" 18 = 18" 19 = 19"	R = Round	16 = 16W 20 = 20W 32 = 32W	9CCT = 90 CRI, CCT Selectable	120 = 120V UNV = 120-277V	Blank = 0-10V Dimming T = Triac Dimming	W = White BN = Brushed Nickel	Blank = No Sensor /MVS = Microwave Occupancy Sensor	Blank = No Option /EM = Battery Backup /EMBB = Battery Backup					

