

RIFLE CAMP PARK IMPROVEMENT PROJECT



Woodland Park, New Jersey

PASSAIC COUNTY PARKS, RECREATION, & OPEN SPACE MASTER PLAN

- Adopted by the Board of Chosen Freeholders in July 2014
- Provides detailed information on the state of the Passaic County Park System
- Offers a vision for the future based upon community outreach and a guideline of needed repairs



PROGRESS TO DATE . . .

- Goffle Brook Park Improvements
- Dey Mansion Restoration Project
- Preakness Valley Golf Course Improvements
- Weasel Brook Park Improvement Project
- Garret Mountain Reservation Improvement Project
- Lambert Tower Restoration
- Highlands Preserve and Passaic County Trail Network Projects
- Passaic County Riverfront Park Project
- Rea and Vanderhoef Houses Restoration Projects



RIFLE CAMP PARK IN THE PR&O MASTER PLAN

- Priorities for Rifle Camp Park listed in the PR&O Master Plan:
 - Improve signage and visibility to the Park
 - Repave roadways and parking lots
 - Develop a wayfinding signage within the Park
 - Repair the par fitness course
 - Restore the amphitheater
 - Replace and improve lighting
 - Provide a spray park amenity
 - Develop a combined tot lot and playground space
 - Renovate the John J. Crowley Nature Center and Astronomical Observatory



RIFLE CAMP DARK



- 169 acre park located in Woodland Park, New Jersey located south of the Garret Mountain Reservation.
- Mix of active and passive recreation, including trails, par course, overnight camping areas, amphitheater, and nature center.
- The Park is accessed via Rifle Camp Road near the intersection of Ove Avenue – the main leads to five parkir



RIFLE CAMP PARK PHASE I IMPROVEMENT PROJECT

- The Freeholders retained Remington & Vernick Engineers in 2016 for professional consulting services to explore and design, among other recreational activities, the following:
 - Repairs to existing 4 bathrooms;
 - Construction of a new pavilion;
 - Creation of a small sledding area;
 - Basketball Court;
 - Par Exercise Course;
 - Playground Equipment;
 - Removal of Existing Toboggan Run;
 - 5K Race Loop;
 - Cross Country Skiing;
 - Development of Scenic Views;
 - Dog Park; and
 - Other Recreational Activities, as applicable.



FRIENDS OF PASSAIC COUNTY PARKS, INC.

- A non-profit created by the Board to raise private donations for the Passaic County Park System, run programming in the Parks, and act as a partner in executing infrastructure projects.
- The relationship between the Board and Friends is governed by a MOU ratified on April 16, 2016 – the Friends and Parks and Recreation Department work in concert to secure grant funding and execute projects.
- The Friends hosts the Passaic County Fair annually at the Garret Mountain Reservation which raised approximately \$100,000 to invest in programming and infrastructure improvements in the Passaic County Park System.
- In 2017, the Friends in partnership with the County are underwriting a Movies in the Parks Series and a Summer Concert Series, with no impact to Passaic County taxpayers.



FRISBEE DISC GOLF COURSE GRANT APPLICATION

- In 2016, after responding to requests made by constituents to the Parks and Recreation Department, the Friends applied to the Horizon Foundation for grant funding to install a Disc Golf Course – the grant award of \$20,000 was made in September.
- It was determined that disc golf was a recreational activity in line with the Parks, Recreation, and Open Space Master Plan, would attract new visitors to Rifle Camp Park, and was a relatively inexpensive new amenity that could be added to the Park.
- Frisbee disc golf is located at other county parks, including Campgaw in Bergen County and Ocean County Park in Ocean County.
- County staff met with Friends of Garret Mountain at Rifle Camp Park to discuss the Phase I Improvement Project and Disc Course Proposal to seek input.
- Throughout the entirety of the project, the Friends and Parks Department have been working in conjunction with the County's NJDEP-certified Forester to ensure that the proposed route does not detrimentally impact the eco-system at Rifle Camp Park.
- The trees being removed as part of this project would be slated for removal regardless of whether a disc golf course was being installed because, on the expert advice of the Forester, too many saplings competing for sunlight and nourishment is detrimental to the long-term health of the forest.



PROPOSED FRISBEE DISC GOLF COURSE AT RIFLE CAMP PARK



CONCLUSIONS FROM THE COUNTY FORESTER ON THE PROPOSED FRISBEE DISC COURSE

- Trees marked for removal would be lost regardless due to competition for light and nutrients because they are in the “stem exclusion” stage.
- Removing these trees is beneficial for the remaining trees as it reduces the intense competition for light and nutrients, and allows the forest to prosper.
- Conducted a site visit of a similar frisbee disc golf course in West Milford and witnessed no damage to trees from frisbees that would cause health concerns for the trees.
- The current course layout is well planned throughout Rifle Camp Park and designed in a manner to limit impact

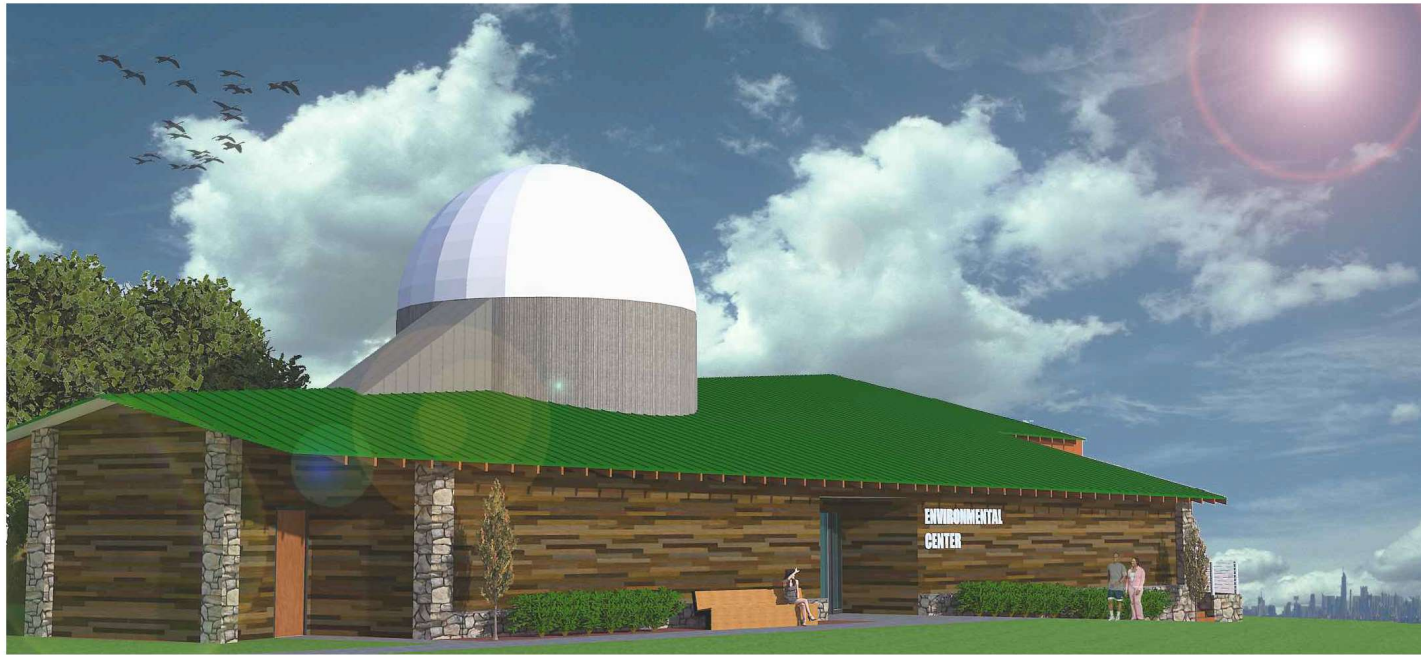


REGULATION OF FRISBEE GOLF AT RIFLE CAMP PARK

- As with most activities in the Passaic County Park System, the use of the frisbee disc golf course will be regulated and monitored by the Passaic County Parks and Recreation Department and the Passaic County Sheriff.
- Large groups or tournaments wishing to use the course will be required to take out a permit and pay a user fee.
- The County will retain the right to deny access to the course to large groups or tournaments if it is determined, after consultation with appropriate staff and the forester, that it could be detrimental to the ecosystem.



RIFLE CAMP PARK PHASE II IMPROVEMENTS



ENTRY PERSPECTIVE



EAST ELEVATION



SOUTH ELEVATION

<p>COPPA MONTALBANO ARCHITECTS</p> <p>97 Lockerman Avenue Totowa, NJ 07083 O: 973.896.8809 F: 973.896.8853 coppamontalbano.com</p>	
<p>□ S.M. COPPA, AIA 1944 - 2022</p> <p>□ M.B. MONTALBANO, AIA 1946 - 2022</p>	
<p>ENVIRONMENTAL CENTER PASSAIC COUNTY COMMUNITY COLLEGE</p>	<p>387 RIFLE CAMP ROAD WOODLAND PARK, NJ 07424 BLOCK: 113 LOT: 3.01</p>
<p>REVISION</p> <p>VISUALIZATION</p>	<p>DATE</p>
<p>NTS</p> <p>Scale</p> <p>TITLE</p> <p>DATE</p> <p>MEMO</p> <p>REVISION</p>	<p>A-3</p> <p>2017/01/23</p> <p>2017/01/23</p>